



You choose the design of the operating units with your heart. And the technology with your head.



Sauter's operating units can be as varied as the rooms themselves.

The electronics inside Sauter's room operating units can be packed in various designs. This allows you to choose a model that matches the interior design, the furnishings and the colour scheme. Apart from the ones shown here, there are several other designs available.

Functions for every requirement

Apart from a choice of designs, Sauter's operating units also provide a wide range of functions:-

EYB 250/251

Sensor and setpoint adjuster

EYB 252/253/254

Sensor, setpoint adjuster, buttons for room occupancy or fan control.

EYB 256/020

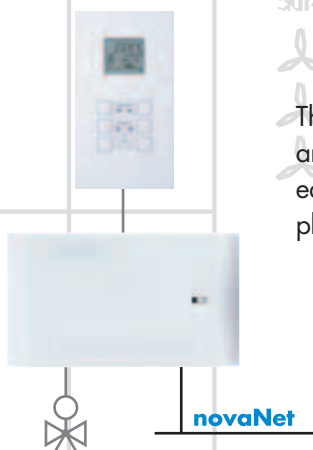
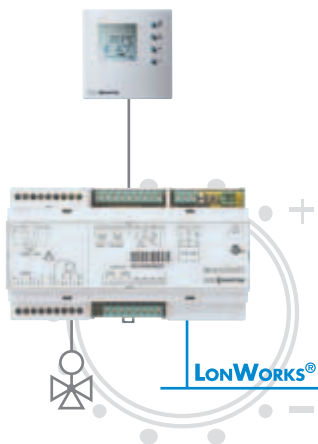
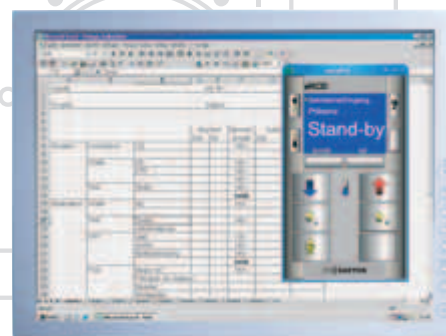
Sensor, setpoint adjuster, buttons for room occupancy or fan control, display for indicating the room temperature and other room conditions.

EYB 270/271/021

Sensor, setpoint adjuster, buttons for room occupancy or fan control, buttons for controlling the lighting, window blinds, windows etc., display for indicating the room temperature and other room conditions.

Room operation via PC

It is also possible to perform operation from the comfort of your armchair – using your PC and the 'eRCD virtual room operating unit'.



The operating units are linked to controllers and form a complete unit with the field equipment. And all this from a single supplier – from Sauter, of course.