

Allianz 'mainBuilding', Frankfurt: Sauter technology makes the most of building flexibility.

This exclusive office building, adjacent to the old opera house in the city's Taunus redevelopment project, is scheduled for completion in late 2005. The seven-storey building, with its distinct tessellated outline, houses 32,000 square metres of rentable office space. Modern office buildings have to be flexible in the way they are subdivided, and this flexibility is complemented by the Sauter room control system.



The Allianz 'mainBuilding' establishes a bridge between the city's public, residential, cultural and business zones. The result is an elegant symbiosis of a traditional listed building, visionary urban planning, state-of-the-art construction technology, and tailor-made office premises management.

Totally flexible room automation with smart plug-in boxes

An open building architecture – one that can be flexibly subdivided – is a major success factor when renting out office space.

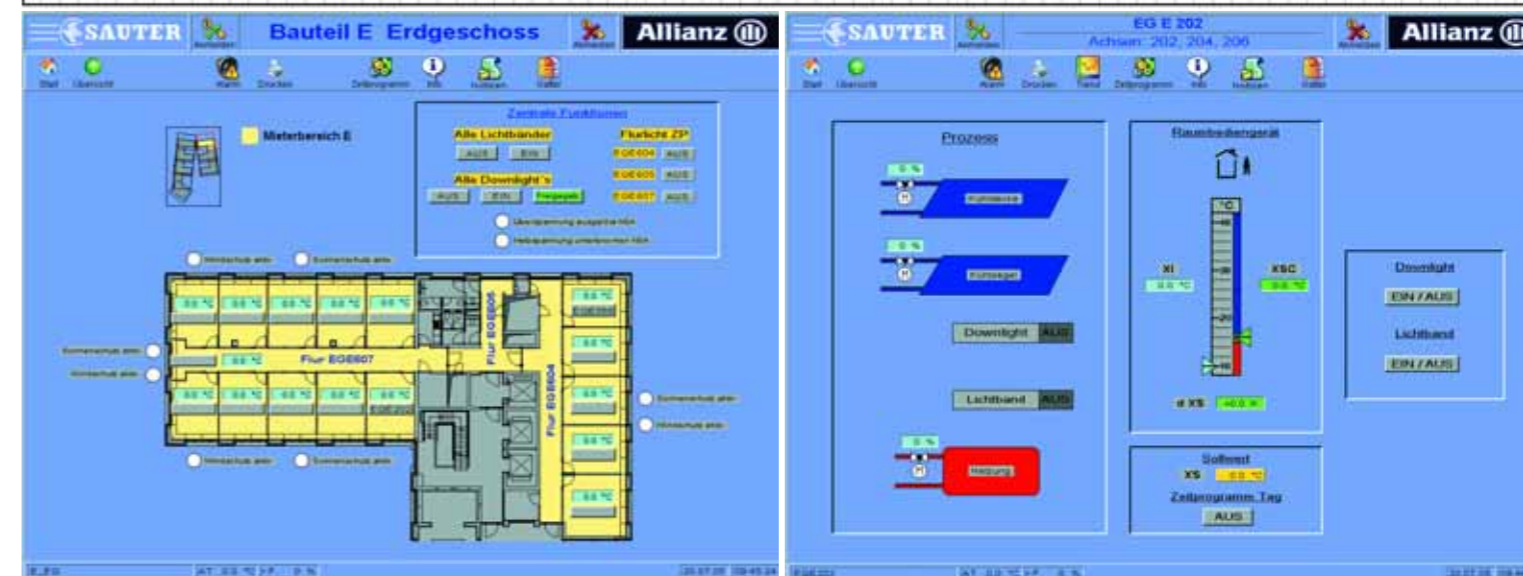
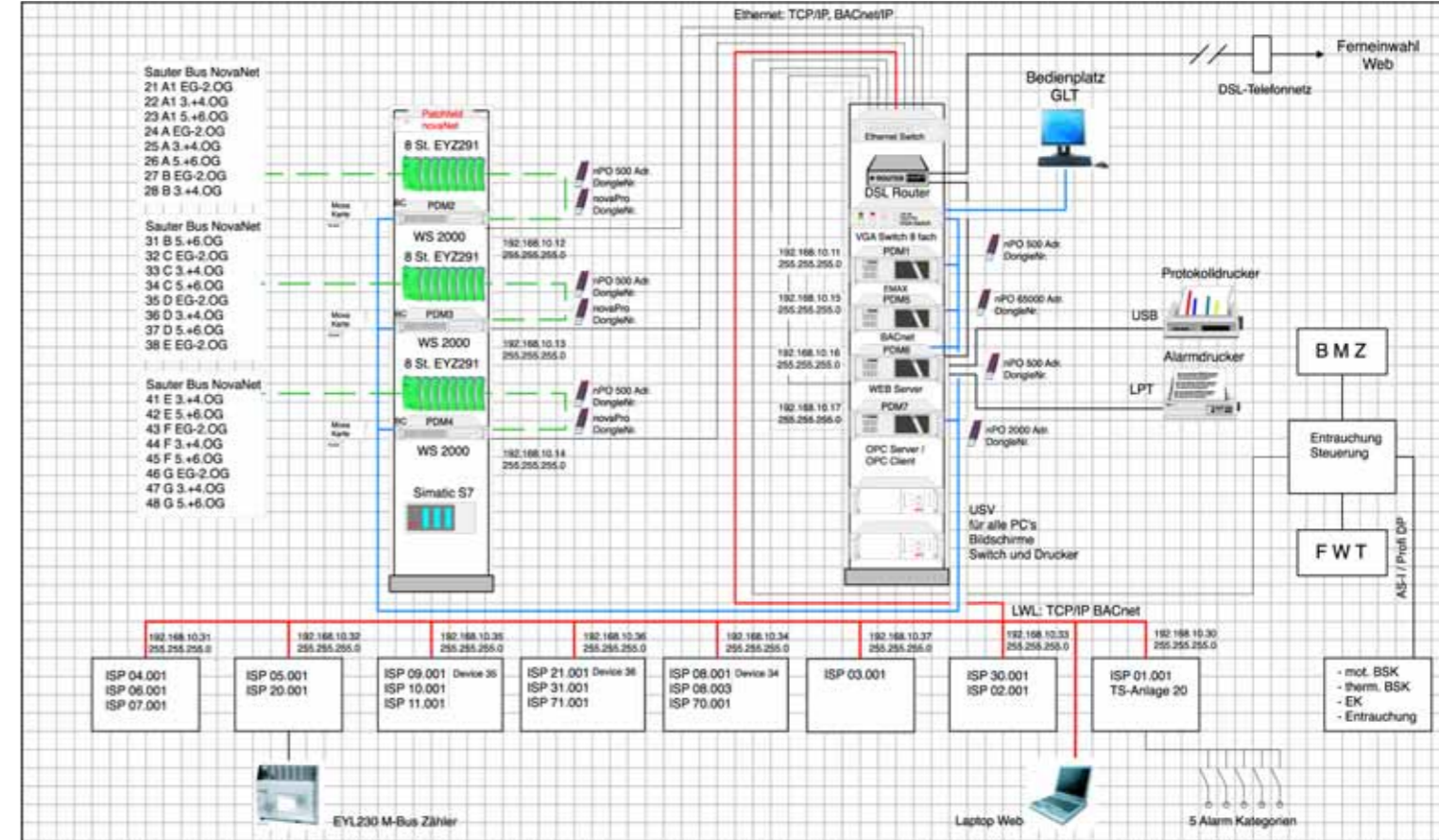
This, of course, applies to the 'mainBuilding' as well. To date, office repartitioning has entailed considerable

effort for swapping and reinstalling room controllers. But now there has been a decisive breakthrough in the shape of a solution premiered at ISH 2005: the 'easy flexible Room Box' (eFRB) is an intelligent plug-in unit that houses a Sauter ecos regulation and control unit.

Innovative wiring technology routes all of the interface cables via a simple plug-in connector, so changing the room controller is as easy as plugging an electrical appliance into a wall socket. Back at the wiring distributor, it is only necessary to reconfigure some jumpers to reflect the new room partitioning – a task that any building operator can perform. That also represents an immense benefit to facility management.

Sauter engineering throughout the building

972 eFRB plug-in boxes form part of an installation with a total of around 35,000 data points. EYT 250 touch-panels or regular user panels can be deployed, depending on individual needs and preferences.



So there can be a flexible response to floor space repurposing on this level, too.

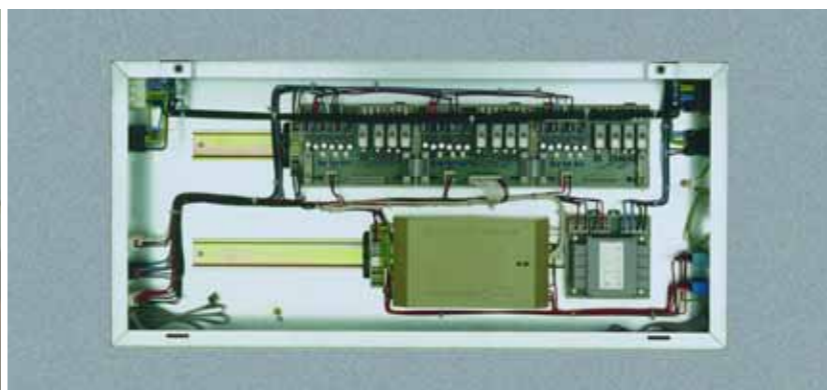
Exterior window blinds are controlled, changed and assigned at the management level with novaPro Open. The building's

HVAC equipment interfaces to the management level via BACnet, and energy counters connect via an M-Bus. Trox smoke extractors integrate with the system in a similar way.

The overall building management system at the 'mainBuilding' demonstrates just how flexibly contemporary offices can adapt their internal workings, even long after construction work is complete.

This progressive technology is already in action at quite a large number of premises, with a total of over 3500 eFRB controllers installed in the field.

patrick.neu@de.sauter-bc.com



eFRB (easy flexible Room Box)