

# Atrium Business Park in Luxembourg: Sauter Technology contributes to more quality of life and greater productivity.



In its first year of business, SRL (Sauter Régulation Luxembourg) won a contract for technical implementation of a major project in the Atrium Business Park. The work involved setting up a centralised building management system for over 47,000 m<sup>2</sup> of prestige office space, plus adjoining zones covering more than 3,000 m<sup>2</sup>.

At the instigation of the Luxembourg planner, SITLUX (a subsidiary of French company TAMARINDI) suggested to the awarding authority IKOGEST that the installation should be planned around a Sauter building management system.

## An installation with state-of-the-art technology

The installation concept centres on the 'tri-generation' principle, i.e. combined electrical power, heating and cooling:-

Electricity for powering the installation comes from a pair of gas engines that are cooled by water from the low-temperature heating circuit. Two boilers (optionally doing alternating duty) heat this water to a steady 90°C for supplying the absorption cooling equipment.

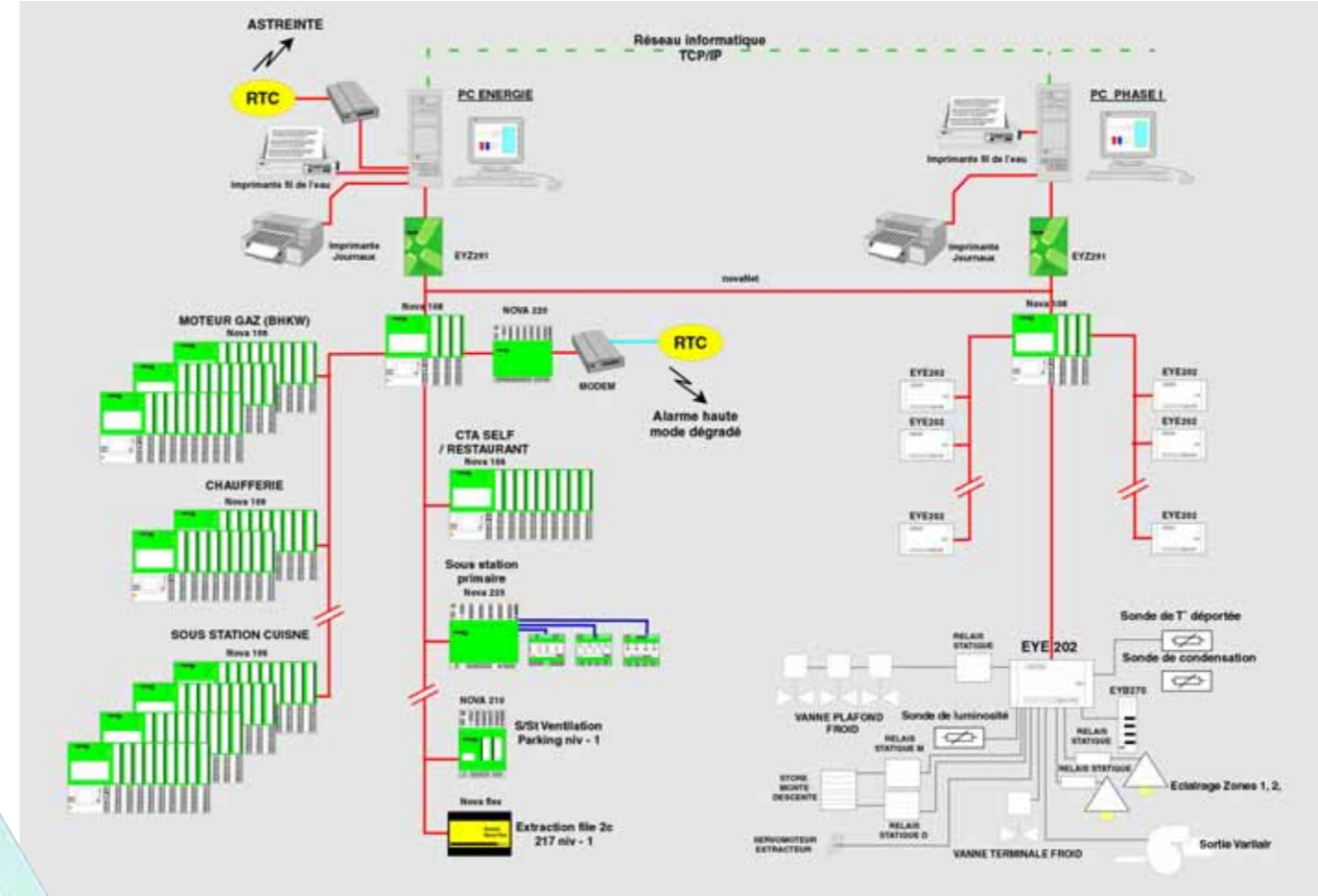
A Sauter EY3600 novaPro 32 building management system monitors the delicate balance of this linkage.

Given the high standards demanded by this project, there are plans to incorporate dual redundancy into all the technical installations over time and thus guarantee totally reliable operation.

## Scope of the project

The project will be implemented in several phases. The initial phase encompasses a total of nearly 300 EY3600 automation stations and ecos intelligent unitary controllers, with around 10,000 data points overall.

Not only do the automation stations monitor tri-generation activity, they also control and regulate air-handling units throughout the office complex and adjoining buildings such as restaurants and car parks. EY3600 ecos intelligent unitary controllers oversee comfort functions in office areas, like adjusting the brightness of indoor illumination, opening and closing outdoor window blinds, and managing the chilled-beam systems.



Room control units establish the desired climatic conditions for individual offices.

## Conclusion

This project marks a successful start for the recently established Luxembourg agency, while also demonstrating its competence

and motivation. Our small team in Luxembourg provided all services, with support from regional headquarters in Nancy (France). Now they enthusiastically look forward to implementing the next planned round of expansion.

[michel.marchand@fr.sauter-bc.com](mailto:michel.marchand@fr.sauter-bc.com)



Jean-Luc Hilpert Thierry Holtzner

SAUTER RÉGULATION  
40 a, rue Robert Schuman  
L - 5751 FRISANGE  
Tél: 00352 26 67 18 80  
Fax: 00352 26 67 18 81