

Sauter components provide the right air in laboratories and clean rooms without fail

Even the best ventilation and safety system concepts mean nothing without state-of-the-art components plus correct installation and implementation. Sauter has the right system hardware and installation teams for all situations, whether in electronic or pneumatic, communicative or explosion protection environments.

Top industrial standards with pneumatic field devices

The high-availability and long-life components in Sauter's pneumatic product range safeguard clean-room production in industry. The pneumatic volume-flow controllers and damper drives from Sauter are the best system control solutions for tightly-sealed rooms in the industry. We can provide customers with volume-flow

boxes made of either sheet steel, stainless steel or synthetic material and which are fully equipped with controllers and drives.

System solutions for laboratory extractors – explosion protection included

Sauter extractors used in laboratories active in fields where explosions are a risk also perform safely and meet all directives. In addition, our pneumatic volume-flow controllers, damper drives, sash window sensors and monitoring facilities based on DIN 12924 (new EN 14715) already meet all future requirements.

Broad range of services

Our innovative products show just how much can be done with modern technology. All you need to centrally launch, monitor and perform maintenance of one or more laboratories is a Sauter Touch Panel EYT250. Anyone authorised may set all the necessary measurements on a user-prompted operating station. At the same time a separate controller in each room will set the exact air balance, room temperature and room pressure controls.

Communication in the room will be performed by a Sauter novaNet or, if necessary, open systems like LON.

Special volume-flow controllers (type RLE151) providing precise recording of operating pressure thanks to static pressure sensors, form the basis of exact airflow

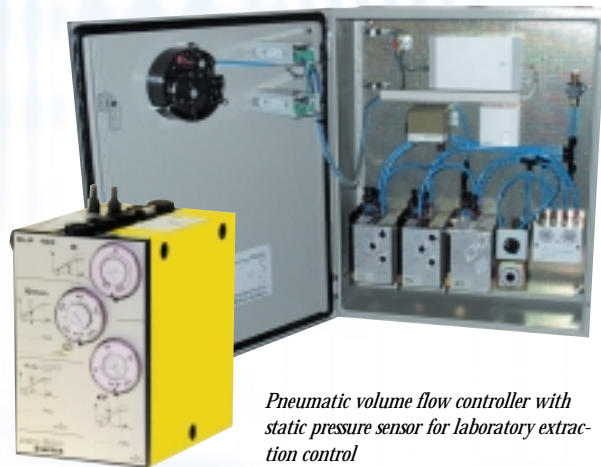
control. Customers also have the option of communicating with open systems (e.g. LON) through an accessory module.

The safety of laboratory personnel depends not only on maintaining the correct balance between the supply and outflow of air, but also on secure operating of the laboratory extractor. It was thus with the specific aim in mind of measuring air inflow speed through the front sash that Sauter developed the highly precise SVU100 flow

sensor This sensor is even capable of detecting dangerous flow reversals in case of an accident. Thanks to equipment like this – used in combination with an RXE110 laboratory extractor – all applicable safety regulations you face will be met.

rolf.schulze@ch.sauter-bc.com

Room control module with supply, exhaust and room pressure controller building management system connection with monitor EYE206

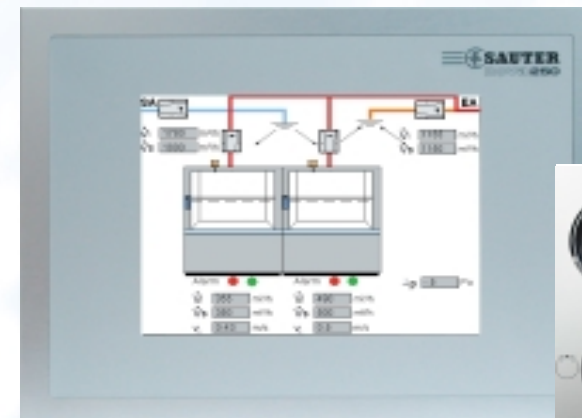


Pneumatic volume flow controller with static pressure sensor for laboratory extraction control connected with a pneumatic damper drive, runtimes of 3 seconds for a damper angle of 90° are standard.

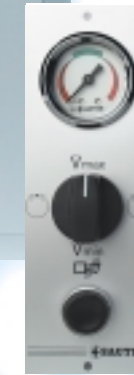


Electronic supply and air-volume flow controller (optional with LON module).

EYT 250 touch panel



RXE 110 laboratory extraction unit



RXE 212 laboratory extraction unit



SGU 100 sash sensor



SVU 100 air-flow transducer



TUP 224 pneumatic sash sensor